

*Coming in May...*



# Women in BUSINESS

*Finding the Balance*

**Thursday, May 20**

**5:30-8:30 pm • \$40**

**The Dolce Norwalk Conference Center**

*For tickets*

On sale after March 1, go to our website: [Mofflymedia.com](http://Mofflymedia.com)  
or contact Caroline Coursen at (203) 571-1631

*Advertise or Become a Sponsor*

Contact your Moffly Media representative or  
Paul Mattus at (203) 571-1651 or [paulm@mofflymedia.com](mailto:paulm@mofflymedia.com)

.....  
A portion of the proceeds will be donated to



Fairfield County  
Community Foundation  
*Fund for Women and Girls*





Finding the Balance | Thursday, May 20 | 5:30-8:30 pm • \$40  
To Advertise: Please contact your Moffly Media Representative or call 203-571-1651

Moffly Media, publishers of *Greenwich*, *Westport*, *New Canaan•Darien*, *Stamford* and *athome in Fairfield County* Magazines, is proud to host Women in Business 2010.

## Women in Business Event

**Thursday, May 20 5:30-8:30 pm**

The Dolce Norwalk Conference Center

Total Attendees: 250

Publication Dates: May/June Issues – May 1, 2010

This evening event will be a forum for professional women and women business owners to mingle and network, share expertise and gain insight into new opportunities. Over 200 women attend this exclusive event which will feature a panel of noteworthy and well respected women executives selected by Moffly Media. They will share their personal career experiences and wealth of knowledge on leadership, creating balance, career development, and today's business climate — all in a dynamic and informative format!

## Sponsorships

Sponsorships are available and unite varying levels of advertising in up to four Moffly publications, web content, e-newsletters and exposure at the "Women in Business" evening. (See attached sponsorship details/costs)

Highlight and promote your company, your services, your products and your women executives through this targeted and innovative marketing/event opportunity!

## Supporting a Cause



A portion of the proceeds from the "Women in Business" event will be donated to the Fairfield County Community Foundation "Fund for Women and Girls." The mission of this fund is to effectively address the needs of women and girls in Fairfield County. The foundation educates women about philanthropy and engages them in creating change through collective, targeted giving. It raises a permanent endowment to generate support for programs that foster the economic, educational, physical, emotional and social growth of women and girls. Visit the FairfieldCounty Community Foundation online at: [www.fccfoundation.org](http://www.fccfoundation.org).

## Wide Distribution

*Greenwich*, *New Canaan•Darien*, *Westport* and *Stamford* Magazines collectively reach a circulation of 34,500 and total audience of 159,000 in and around Fairfield County. All Moffly Media titles are distributed by paid subscriptions, 150 newsstands county wide, public places, and community/charity events.

### THIS YEAR'S PANEL



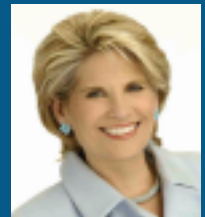
**Susan Filan**

Senior Legal Analyst for MSNBC, former prosecutor for the State of Connecticut and a trial lawyer.



**Angela Santomero**

The imaginative powerhouse behind the uber hit *Blue's Clues* (Nickelodeon) and the new sensation *Super Why!* (PBS Kids).



**Dr. Dale Atkins**

Ph.D, a licensed psychologist, author — *Sanity Savers: Tips for Women to Live a Balanced Life* and frequent guest expert on the *Today Show*.



**Marit Price**

Host of the STAR 99.9 *Most Music Morning Show*.